

## 2011 National Training of Trainer Courses: On-Line Training of Trainer Registration Form

### About the Center for Inclusive Child Care:

The Center for Inclusive Child Care (CICC) is a centralized, comprehensive resource network for promoting and supporting inclusive early childhood and school age programs and providers. This network provides leadership, administrative support, training, and consultation to early care and education providers, school age care providers, parents, and the professionals who support providers and parents of children with special needs. The Center for Inclusive Child Care is part of Concordia University's College of Education in St. Paul, Minnesota.

The Center for Inclusive Child Care is dedicated to increasing the availability of quality options for families of children with special needs in community-based early childhood and school age child care. Services include inclusion trainer support, training of trainer opportunities, inclusion consultation and training, technical assistance, disability resources for professionals and families at [www.inclusivechildcare.org](http://www.inclusivechildcare.org), a comprehensive Learning Center at [www.inclusivechildcare.org](http://www.inclusivechildcare.org), and links to hundreds of disability and inclusion resources. The CICC is funded through the Minnesota Department of Human Services and the Minnesota Department of Education, the McKnight Foundation, and revenue sources.

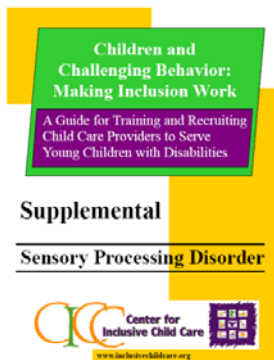
*Customized courses can be arranged for groups of 10 to 15 participants. Contact Cindy Croft at 651-603-6265 or [croft@csp.edu](mailto:croft@csp.edu) for more information. CEUs are also available at course completion for an additional fee. Visit [www.inclusivechildcare.org](http://www.inclusivechildcare.org) and click on *Learning Center* for complete course information.*

### About the Courses:

Training workshops developed from the Train the Trainer courses are appropriate for child care, Head Start, special education, Learning Readiness, and school age providers and educators. All work must be successfully completed in order to be certified in this training curriculum by the Center for Inclusive Child Care. Upon certification, trainers can be listed in the trainer registry at [www.inclusivechildcare.org](http://www.inclusivechildcare.org). Note: The CICC does not hire trainers nor guarantees employment as a trainer but only offers the training of trainer certification and an opportunity to market oneself through the CICC trainer database.



This Training of Trainer course is based on the training curriculum *Children and Challenging Behavior: Making Inclusion Work*, an evidence-based, peer-reviewed narrative training manual with accompanying training activities designed for each workshop (two volume set). There are a total of seven narrative chapters with 4–8 corresponding training activities that can be developed into a series of seven 2–4 hour workshops or into credit coursework. Materials include the function of behavior, the role of environment, tools for your toolbox, specific strategies for ADHD and Autism, and much more. The training of trainers is four weeks in length, with mandatory messageboard postings and four mandatory 45-minute chats. In addition, there will be required correspondence between the instructor and each participant in the form of 'reflections of learning.' Course cost including the two volume curriculum is \$250.00.



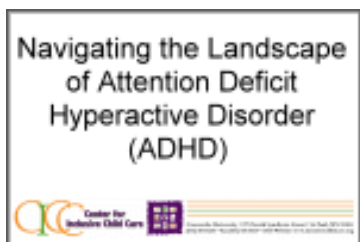
This Training of Trainer course *Sensory Processing Disorder* is based on material which is a supplemental to the curriculum *Children and Challenging Behavior: Making Inclusion Work*, an evidence-based, peer-reviewed narrative training manual with accompanying training activities manual designed for each workshop (two volume set). In *Sensory Processing Disorder* (the supplemental) there is one narrative chapter and one set of corresponding training activities on CD-ROM that can be developed into a one to two 2–6 hour workshop or into credit coursework. Also included is the spiral bound booklet *Supporting Sensory Preferences in Young Children* (\$15.00 value). Materials include the definition of SPD, the seven senses, strategies for improving a child care environment, and much more. The training of trainers is three weeks in length, with mandatory messageboard postings and three mandatory 45-minute chats. In addition, there will be required correspondence between the instructor and each participant in the form of ‘reflections of learning.’ Course cost including the CD-Rom is \$125.00.



This Training of Trainer Course *The Six Keys: Strategies for Promoting Children's Mental Health in Early Childhood Programs* is based on the curriculum by the same name and uses evidence-based practice and current research to demonstrate key components necessary for promoting emotional well-being in early childhood programs using a training manual with corresponding training activities designed for each workshop (two volume set). There are a total of seven narrative chapters with 4–8 training activities each that can be developed into a series of seven 2–4 hour workshops or into credit coursework. Materials include theories of emotional development, resilience, self-regulation, temperament, and many useful strategies for the early childhood setting. The training of trainers is four weeks in length, with mandatory messageboard postings and four mandatory 45-minute chats. In addition, there will be required correspondence between the instructor and each participant in the form of ‘reflections of learning.’ Course cost including the two volume curriculum is \$250.00.



This Training of Trainer Course *Autism Spectrum Disorder: Overview and Basic Strategies for Inclusion in Community Settings* utilizes the CICC Training Tool Kit: *What is Autism?* and includes a power point presentation, handouts, ice breakers and access to video clips. Autism Spectrum Disorder is on the rise with the Center for Disease Control estimating 1 in 110 children diagnosed on the Spectrum. With this number of children affected, many more children with Autism are being served in various community settings. The Training of Trainer Course provides the template for training content on understanding the diagnosis and basic strategies for inclusion. The training of trainers is three weeks in length with three mandatory chat times and message board postings. In addition, there will be required correspondence between the instructor and each participant in the form of ‘reflections of learning.’ Course cost including the Training Tool Kit curriculum is \$125.00.



This Training of Trainer Course *ADHD: Including Children in Community Settings* utilizes the CICC Training Tool Kit: *Navigating the Landscape of Attention Deficit Hyperactive Disorder* and includes a power point presentation, handouts, ice breakers and access to video clips. ADHD is a diagnosis seen in many children in early childhood and youth settings. The Training of Trainer Course provides the template for training content on understanding the diagnosis and basic strategies for inclusion. The training of trainers is three weeks in length with three mandatory chat times and message board postings. In addition, there will be required correspondence between the instructor and each participant in the form of ‘reflections of learning.’ Course cost including the Training Tool Kit curriculum is \$125.00.



This Train the Trainer Course *The Nurtured Heart Approach* is based on the best selling work of Howard Glasser and Jennifer Easley *Transforming the Difficult Child: The Nurtured Heart Approach*. The material applies a unique approach for working with children who have high intensity temperament and challenging behavior using four key strategies, which have been researched as highly effective. Participants are required to purchase the book and will be provided a CD-ROM with the supplemental workshop training activities which can be used to develop a series of workshops on the Nurtured Heart Approach. The training of trainers is three weeks in length, with mandatory messageboard postings and three mandatory 45-minute chats. In addition, there will be required correspondence between the instructor and each participant in the form of ‘reflections of learning.’ Note: Course cost including the CD-ROM of workshop activities is \$125.00. (book sold separately at [www.amazon.com](http://www.amazon.com))

**Children's  
Development from  
Birth to 3 Years**  
What to expect and  
when to be concerned



**Inclusion In Child Care: A Manual for  
Consultants**

By Christine Bentley



This Train the Trainer course *Consultation and Support for Inclusion in Community Settings* teaches successful practices for early childhood and school- age consultants to support program improvement in order for children with special needs to be included in community programs. This online training includes strategies and systems the consultant can use in providing services to early childhood and school- age care providers. The sessions include general "how to consult" components as well as consultation specific to inclusion of children with special needs. All course material will be downloaded from the class website. Materials include a 100+ page consultation manual with reproducible forms including intake forms, individual program plans, behavior plans and other useful tools for consultation purposes.

The training of trainers is four weeks in length, with mandatory messageboard postings and four mandatory 45-minute chats. In addition, there will be required correspondence between the instructor and each participant in the form of 'reflections of learning.' Upon certification, consultants can be listed on the trainer/consultant registry at [www.inclusivechildcare.org](http://www.inclusivechildcare.org). The CICC contracts with consultants as need and funding allows but does not guarantee any number of hours. There is an opportunity to market yourself through the CICC trainer and consultant database. Note: Course cost including the downloadable consultation manual is \$250.00



This Train the Trainer course *Project EXCEPTIONAL: A Guide to Training and Recruiting Child Care Providers to Serve Young Children with Disabilities* is based on a two volume training curriculum from the California Dept. of Education. Volume 1 contains 9 narrative chapters which correspond to the training activities in Volume 2 on topics like disability awareness, inclusion law, family/professional partnerships, and identifying/referring children at risk as well as much more. Each of the nine chapters has 5–8 training activities that can be turned into 2–3 workshops per chapter. Other handouts will be downloadable from classroom. The training of trainers is four weeks in length, with mandatory messageboard postings and four mandatory 45-minute chats. In addition, there will be required correspondence between the instructor and each participant in the form of 'reflections of learning.' Work must be successfully completed in order to be certified in this training curriculum by the Center for Inclusive Child Care. Note: Course cost including the two volumes is \$250.00.

**About the Technology:**

These courses are offered on the Internet in a classroom at [www.inclusivechildcare.org](http://www.inclusivechildcare.org). Once you are registered for the class, you will receive a technology email with instructions for entering a secure classroom. There are *easy to follow* instructions for using the chatroom and the discussion board. Technical support will also be available for you. You will need computer access and Internet access. High speed connection is recommended but is not necessary. Our classroom does not require any special downloads or software.

**About the Faculty:**

The CICC Train the Trainer Courses are taught by experienced educators who have strong academic and training backgrounds as well as real-world experience working with young children. Their profiles can be seen at [www.inclusivechildcare.org](http://www.inclusivechildcare.org) in the Learning Center.

**Registration Form. Please print clearly.**

Name: \_\_\_\_\_

Mailing Address: \_\_\_\_\_  
\_\_\_\_\_

Phone #: \_\_\_\_\_

E-mail (Please Print Clearly) \_\_\_\_\_

Years of Experience as a Trainer \_\_\_\_\_

Do you have a background in special needs, special education, or working with young children with special needs? Please write a brief description: \_\_\_\_\_

**\*\*\*Check which course you are registering for\*\*\***

The CICC Train the Trainer Courses can be taken in the following sequence if you are interested in taking all the courses in progression of knowledge base. However, there are no pre-requisites for any courses for which you sign up. Each represent stand-alone courses.

**Project EXCEPTIONAL: A Guide to Training and Recruiting Child Care Providers to Serve Young Children with Disabilities:**

- 2011 January 18–February 16, Chats on Mondays Jan. 24, 31, Feb. 7, 14 @ 7:00–7:45 PM CST
- 2011 May 31–June 29, Chats on Mondays June 6, 13, 20, 27 @ 7:00–7:45 PM CST

**Children and Challenging Behavior: Making Inclusion Work:**

- 2011 February 3–March 4, Chats on Wednesdays Feb. 9, 16, 23, March 2 @ 7:00–7:45 PM CST
- 2011 June 2–June 30, Chats on Wednesdays June 8, 15, 22, 29 @ 7:00–7:45 PM CST

**The Nurtured Heart Approach:**

- 2011 March 3–18, Chats on Wednesdays March 9 & 16 @ 7:00–7:45 PM CST
- 2011 June 16–30, Chats on Wednesdays June 22 & 29 @ 8:00–8:45 PM CST

**Children's Development: What to Expect and When to Be Concerned:**

- 2011 February 21–March 8, Chats on Mondays Feb. 21, 28, March 7 @ 8:00–8:45 PM CST
- 2011 September 12–September 27, Chats on Mondays Sept. 12, 19, 26 @ 8:00–8:45 PM CST

**Sensory Processing Disorder:**

- 2011 October 10–25, Chats on Mondays October 10, 17, 24 @ 8:00–8:45 PM CST

**Autism Spectrum Disorder: Overview and Basic Strategies for Inclusion in Community Settings: (Using Training Tool Kit)**

- 2011 April 4–19, Chats on Mondays April 4, 11, 18 @ 8:00–8:45 PM CST

**ADHD: Including Children in Community Settings (Using Training Tool Kit)**

- 2011 August 4–19, Chats on Thursdays August 4, 11, 18 @ 7:00–7:45 PM CST

**Six Keys: Strategies for Promoting Children's Mental Health in Early Childhood Programs:**

- 2011 March 29–April 25, Chats on Mondays April 4, 11, 18, 25 @ 7:00–7:45 PM CST
- 2011 October 25–November 22, Chats on Mondays Oct. 31, Nov. 7, 14, 21 @ 7:00–7:45 PM CST

**Consultation and Support for Inclusion in Community Settings (Can be a tailored training)**

- 2011 April 26–May 24, Chats on Mondays May 2, 9, 16, 23 @ 1:30–2:15 PM CST or 7 PM CST

Customized courses can be arranged for groups of 12 to 15 participants. Contact Cindy Croft at 651-603-6265 or [croft@csp.edu](mailto:croft@csp.edu) for more information.

**\*\*\*Please include the following payment information:**

Check - Amount enclosed \$ \_\_\_\_\_ **Make checks payable to: Concordia University and mail to Center for Inclusive Child Care.**

Credit Card:     Visa  Master Card  Discover    **Amount to be applied to the credit card:** \_\_\_\_\_  
Card # \_\_\_\_\_    Exp. Date \_\_\_\_\_

V Number (The last 3 digits on the signature line on the back of the card.): \_\_\_\_\_

Billing address of credit card:  
\_\_\_\_\_

*Please return application with registration fee to:*

**Cindy Croft, CICC, Concordia University, 275 N. Syndicate St., St. Paul, MN 55104**

**Or email to: [croft@csp.edu](mailto:croft@csp.edu)**

**Classes are limited to 15 participants. If the class is filled, your check will be returned with your registration or your credit card will be refunded. Courses are non-refundable upon registration acceptance. If classes are not filled, your money will be refunded.**