



2010 National Training of Trainer Courses: On-Line Training of Trainer Registration Form

About the Center for Inclusive Child Care:

The Center for Inclusive Child Care (CICC) is a comprehensive resource network for promoting and supporting inclusive early childhood and school age programs and providers. This network provides leadership, administrative support, training, and consultation to early care and education providers, school age care providers, parents, and the professionals who support providers and parents of children with special needs. The Center for Inclusive Child Care is part of Concordia University's College of Education in St. Paul, Minnesota.

The Center for Inclusive Child Care is dedicated to increasing the availability of quality options for families of children with special needs in community-based early childhood and school age child care. Services include inclusion trainer support, training of trainer opportunities, inclusion consultation and training, technical assistance, disability resources for professionals and families at www.inclusivechildcare.org, a comprehensive Learning Center at www.inclusivechildcare.org, and links to hundreds of disability and inclusion resources. The CICC is funded through the Minnesota Department of Human Services and the Minnesota Department of Education, the McKnight Foundation, and revenue sources.

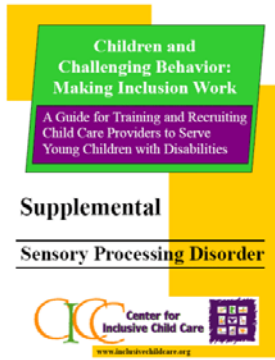
*Customized courses can be arranged for groups of 12 to 15 participants. Contact Cindy Croft at 651-603-6265 or croft@csp.edu for more information. CEUs are also available at course completion for an additional fee. Visit www.inclusivechildcare.org and click on *Learning Center* for complete course information.*

About the Courses:

Training workshops developed from the Train the Trainer courses are appropriate for child care, Head Start, special education, Learning Readiness, and school age providers and educators. All work must be successfully completed in order to be certified in this training curriculum by the Center for Inclusive Child Care. Upon certification, trainers can be listed in the trainer registry at www.inclusivechildcare.org. Note: The CICC does not hire trainers nor guarantees employment as a trainer but only offers the training of trainer certification and an opportunity to market oneself through the CICC trainer database.



This Training of Trainer course is based on the training curriculum *Children and Challenging Behavior: Making Inclusion Work*, an evidence-based, peer-reviewed narrative training manual with accompanying training activities designed for each workshop (two volume set). There are a total of seven narrative chapters with 4-8 corresponding training activities that can be developed into a series of seven 2-4 hour workshops or into credit coursework. Materials include the function of behavior, the role of environment, tools for your toolbox, specific strategies for ADHD and Autism, and much more. The training of trainers is four weeks in length, with mandatory messageboard postings and four mandatory 45-minute chats. In addition, there will be required correspondence between the instructor and each participant in the form of 'reflections of learning.' Course cost including the two volume curriculum is \$250.00.



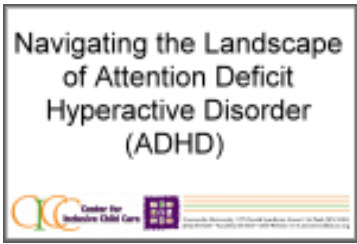
This Training of Trainer course *Sensory Processing Disorder* is based on material which is a supplemental to the curriculum *Children and Challenging Behavior: Making Inclusion Work*, an evidence-based, peer-reviewed narrative training manual with accompanying training activities manual designed for each workshop (two volume set). In *Sensory Processing Disorder* (the supplemental) there is one narrative chapter and one set of corresponding training activities on CD-ROM that can be developed into a one to two 2-6 hour workshop or into credit coursework. Also included is the spiral bound booklet *Supporting Sensory Preferences in Young Children* (\$15.00 value). Materials include the definition of SPD, the seven senses, strategies for improving a child care environment, and much more. The training of trainers is three weeks in length, with mandatory messageboard postings and three mandatory 45-minute chats. In addition, there will be required correspondence between the instructor and each participant in the form of 'reflections of learning.' Course cost including the CD-Rom is \$125.00.



This Training of Trainer Course *The Six Keys: Strategies for Promoting Children's Mental Health in Early Childhood Programs* is based on the curriculum by the same name and uses evidence-based practice and current research to demonstrate key components necessary for promoting emotional well-being in early childhood programs using a training manual with corresponding training activities designed for each workshop (two volume set). There are a total of seven narrative chapters with 4-8 training activities each that can be developed into a series of seven 2-4 hour workshops or into credit coursework. Materials include theories of emotional development, resilience, self-regulation, temperament, and many useful strategies for the early childhood setting. The training of trainers is four weeks in length, with mandatory messageboard postings and four mandatory 45-minute chats. In addition, there will be required correspondence between the instructor and each participant in the form of 'reflections of learning.' Course cost including the two volume curriculum is \$250.00.



This Training of Trainer Course *Autism Spectrum Disorder: Overview and Basic Strategies for Inclusion in Community Settings* utilizes the CICC Training Tool Kit: *What is Autism?* which includes a power point presentation, handouts, ice breakers and access to video clips. Autism Spectrum Disorder is on the rise with the Center for Disease Control estimating 1 in 110 children diagnosed on the Spectrum. With this number of children affected, many more children with Autism are being served in various community settings. The Training of Trainer Course provides the template for training content on understanding the diagnosis and basic strategies for inclusion. The training of trainers is three weeks in length with three mandatory chat times and message board postings. In addition, there will be required correspondence between the instructor and each participant in the form of 'reflections of learning.' Course cost including the Training Tool Kit curriculum is \$125.00.



This Training of Trainer Course *ADHD: Including Children in Community Settings* utilizes the CICC Training Tool Kit: *Navigating the Landscape of Attention Deficit Hyperactive Disorder* which includes a power point presentation, handouts, ice breakers and access to video clips. ADHD is a diagnosis seen in many children in early childhood and youth settings. The Training of Trainer Course provides the template for training content on understanding the diagnosis and basic strategies for inclusion. The training of trainers is three weeks in length with three mandatory chat times and message board postings. In addition, there will be required correspondence between the instructor and each participant in the form of 'reflections of learning.' Course cost including the Training Tool Kit curriculum is \$125.00.



This Train the Trainer Course *The Nurtured Heart Approach* is based on the best selling work of Howard Glasser and Jennifer Easley *Transforming the Difficult Child: The Nurtured Heart Approach*. The material applies a unique approach for working with children who have high intensity temperament and challenging behavior using four key strategies, which have been researched as highly effective. Participants are required to purchase the book and will be provided a CD-ROM with the supplemental workshop training activities which can be used to develop a series of workshops on the Nurtured Heart Approach. The training of trainers is three weeks in length, with mandatory messageboard postings and three mandatory 45-minute chats. In addition, there will be required correspondence between the instructor and each participant in the form of 'reflections of learning.' Note: Course cost including the CD-ROM of workshop activities is \$125.00. (book sold separately at www.amazon.com)

Children's
Development from
Birth to 3 Years

What to expect and
when to be concerned



This Training of Trainer Course *Children's Development: What to Expect and When to Be Concerned* is based on CICC Project EXCEPTIONAL training on red flags, typical and atypical development, and when/how to share concerns with family. Materials include one narrative chapter and one set of corresponding training activities on CD-ROM that can be developed into one or two 2-4 hour workshops or into credit coursework and 25 developmental brochures by the same name. The training of trainers is three weeks in length, with mandatory messageboard postings and three mandatory 45-minute chats. In addition, there will be required correspondence between the instructor and each participant in the form of 'reflections of learning.' Note: Course cost including the CD-ROM of supplement training materials and brochures is \$125.00.



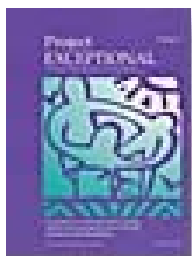
Inclusion In Child Care: A Manual for
Consultants

By Christine Bentley



This Train the Trainer course *Consultation and Support for Inclusion in Community Settings* teaches successful practices for early childhood and school- age consultants to support program improvement in order for children with special needs to be included in community programs. This online training includes strategies and systems the consultant can use in providing services to early childhood and school- age care providers. The sessions include general "how to consult" components as well as consultation specific to inclusion of children with special needs. All course material will be downloaded from the class website. Materials include a 100+ page consultation manual with reproducible forms including intake forms, individual program plans, behavior plans and other useful tools for consultation purposes.

The training of trainers is four weeks in length, with mandatory messageboard postings and four mandatory 45-minute chats. In addition, there will be required correspondence between the instructor and each participant in the form of 'reflections of learning.' Upon certification, consultants can be listed on the trainer/consultant registry at www.inclusivechildcare.org. The CICC contracts with consultants as need and funding allows but does not guarantee any number of hours. There is an opportunity to market yourself through the CICC trainer and consultant database. Note: Course cost including the downloadable consultation manual is \$250.00



This Train the Trainer course *Project EXCEPTIONAL: A Guide to Training and Recruiting Child Care Providers to Serve Young Children with Disabilities* is based on a two volume training curriculum from the California Dept. of Education. Volume 1 contains 9 narrative chapters which correspond to the training activities in Volume 2 on topics like disability awareness, inclusion law, family/professional partnerships, and identifying/referring children at risk as well as much more. Each of the nine chapters has 5-8 training activities that can be turned into 2-3 workshops per chapter. Other handouts will be downloadable from classroom. The training of trainers is four weeks in length, with mandatory messageboard postings and four mandatory 45-minute chats. In addition, there will be required correspondence between the instructor and each participant in the form of 'reflections of learning.' Work must be successfully completed in order to be certified in this training curriculum by the Center for Inclusive Child Care. Note: Course cost including the two volumes is \$250.00.

About the Technology:

These courses are offered on the Internet in a classroom at www.inclusivechildcare.org. Once you are registered for the class, you will receive a technology email with instructions for entering a secure classroom. There are *easy to follow* instructions for using the chatroom and the discussion board. Technical support will also be available for you. You will need computer access and Internet access. High speed connection is recommended but is not necessary. Our classroom does not require any special downloads or software.

About the Faculty:

The CICC Train the Trainer Courses are taught by experienced educators who have strong academic and training backgrounds as well as real-world experience working with young children. Their profiles can be seen at www.inclusivechildcare.org in the Learning Center.

Registration Form. Please print clearly.

Name: _____

Mailing Address: _____

Phone #: _____

E-mail (Please Print Clearly) _____

Years of Experience as a Trainer _____

Do you have a background in special needs, special education, or working with young children with special needs? Please write a brief description: _____

***Check which course you are registering for (Winter/Spring 2010):

The CICC Train the Trainer Courses can be taken in the following sequence if you are interested in taking all the courses in progression of knowledge base. However, there are no pre-requisites for any courses for which you sign up. Each are stand-alone courses.

Project EXCEPTIONAL: A Guide to Training and Recruiting Child Care Providers to Serve Young Children with Disabilities:

- 2010 June 1 – June 28, Chats on Mondays June 7, 14, 21, and 28 @ 7:00 – 7:45 PM CST

Children and Challenging Behavior: Making Inclusion Work:

- 2010 June 16 - July 16, Chats on Wednesday June 23, 30, July 7 & 14 @ 8:00-8:45 PM CST

The Nurtured Heart Approach:

- 2010 August 5-August 21, Chats on Thursdays August 5, 12, 19 @ 7-7:45 PM CST

Children's Development: What to Expect and When to Be Concerned:

- 2010 September 20 – October 6, Chats on Mondays September 20, 27 and October 4 @ 8:00-8:45 PM CST

Sensory Processing Disorder:

- 2010 October 18 – November 3, Chats on Mondays October 18, 25, and November 1 @ 8:00-8:45 PM CST

Autism Spectrum Disorder: Overview and Basic Strategies for Inclusion in Community Settings: (Using Training Tool Kit)

- 2010 August 2- 18, Chats on Mondays August 2, 9, 16 @ 8:00-8:45 PM CST

ADHD: Including Children in Community Settings (Using Training Tool Kit)

- 2010 October 11 – October 27, Chats Monday @ October 11, 18, and 25 7:00- 7:45 PM CST

Six Keys: Strategies for Promoting Children's Mental Health in Early Childhood Programs:

- 2010 September 7 – October 4, Chats Monday nights Sept. 13, 20, 27 and Oct 4 @ 7:00 – 7:45 PM CST

Consultation and Support for Inclusion in Community Settings (Can be a tailored training)

- 2010 September 7 – October 7, Chats on Tuesdays September 14, 21, 28, and October 5 @ 1:30-2:15 PM CST

Customized courses can be arranged for groups of 12 to 15 participants. Contact Cindy Croft at 651-603-6465 or croft@csp.edu for more information.

